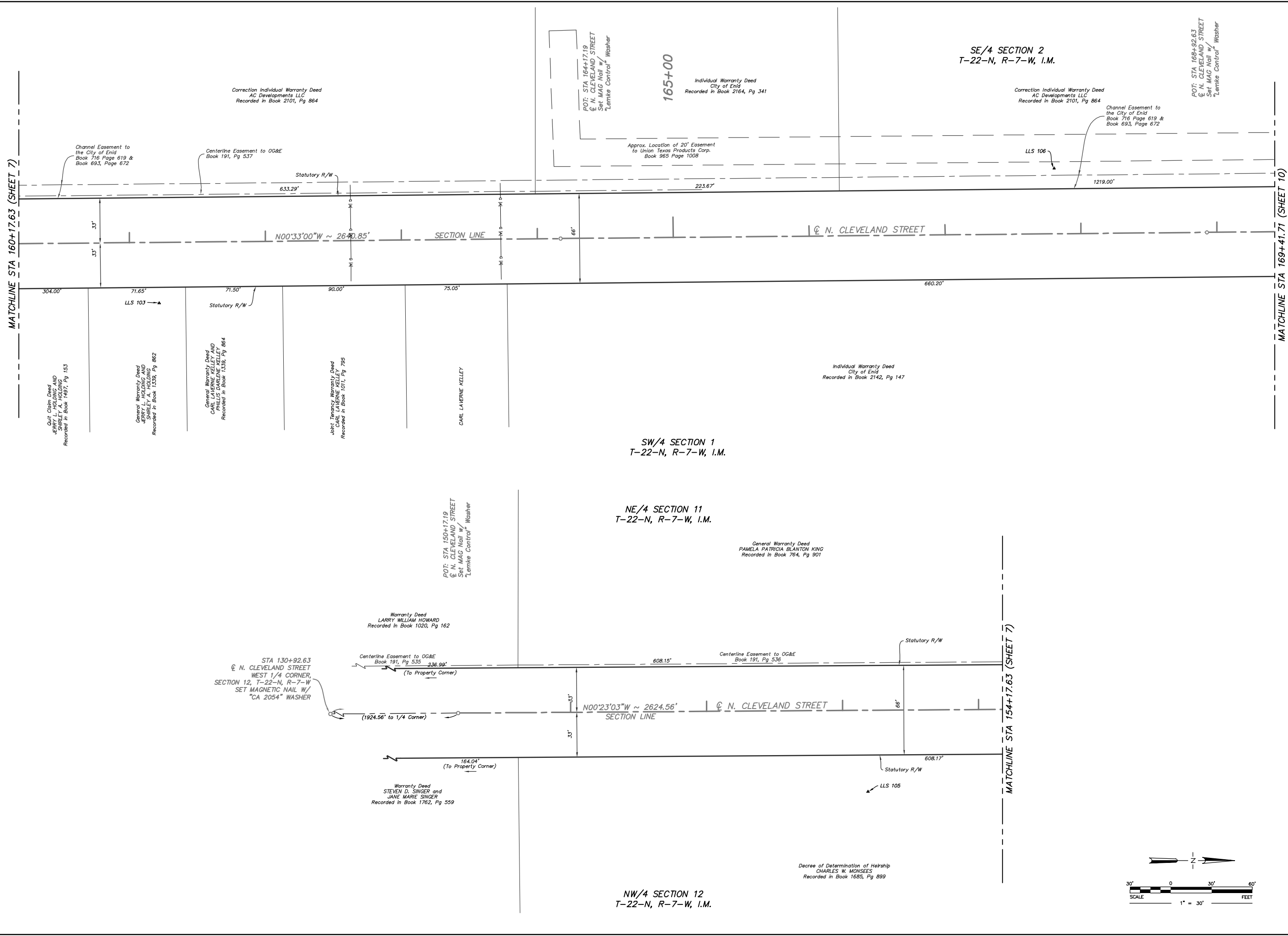


MATCHLINE STA 160+17.63 (SHEET 7)

MATCHLINE STA 169+41.71 (SHEET 10)



**LEIMKE LAND SURVEYING, Inc.**  
 S L S L  
 3228 BART CORNER DRIVE, NORMAN, OK 73072  
 PH: (405) 366-8841 FAX: (405) 366-8840  
 http://www.leimke-ls.com

Mark	Description	Date	Appr.
1.	Additional Topo STA 164+17 to STA 163+58	07/17	MB
2.	C/L CLEVELAND STREET	07/17	MB
3.	Revised Topo 34 RT STA 158+49 to STA 159+63	07/20	MB
4.	C/L CLEVELAND STREET (Curb and Sidewalk)	07/20	MB
5.	Added Survey Data Sheets (Sheets 7 thru 11)	04/16	MB
6.	Revised Stationing of Centerline Alignments and all labels associated to the centerline stationing		

Surveyed By:	DR/CG	13025
Drawn By:	TG	
Approved By:	MB	
Date:	04/02/2013	
Scale:	1" = 30'	
Project No:		

Project: TOPOGRAPHIC SURVEY  
 PROPOSED ROAD IMPROVEMENTS  
 INTERSECTION OF N. CLEVELAND STREET & W. CHESTNUT AVENUE  
 ENID, OKLAHOMA  
 Client: TETRA TECH, INC.  
 119 N. ROBINSON AVENUE, SUITE 700, NORMAN, OK 73102

Sheet Number  
 9  
 Sheet 9 of 11

